

# Land Ownership Valuation Decision Flow Chart

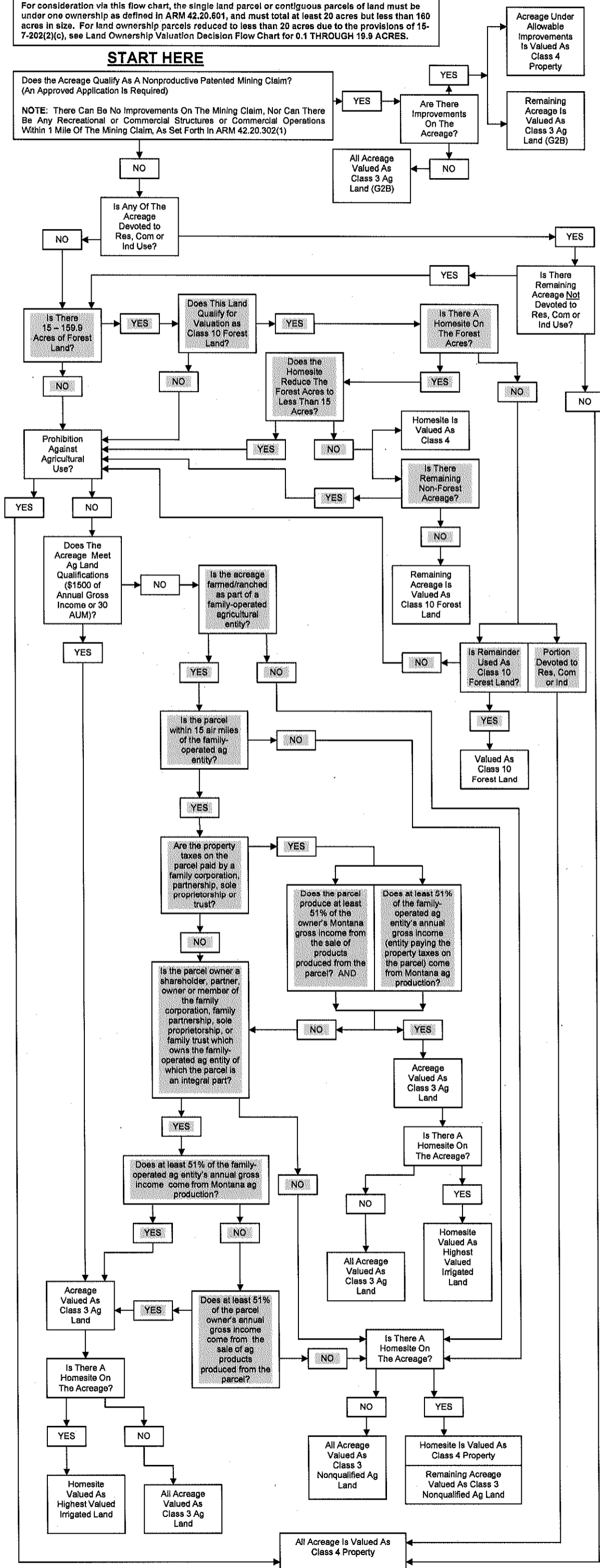
## 20.0 THROUGH 159.9 ACRES (Revised 5/08)

For consideration via this flow chart, the single land parcel or contiguous parcels of land must be under one ownership as defined in ARM 42.20.601, and must total at least 20 acres but less than 160 acres in size. For land ownership parcels reduced to less than 20 acres due to the provisions of 15-7-202(2)(c), see Land Ownership Valuation Decision Flow Chart for 0.1 THROUGH 19.9 ACRES.

### START HERE

Does the Acreage Qualify As A Nonproductive Patented Mining Claim?  
(An Approved Application Is Required)

NOTE: There Can Be No Improvements On The Mining Claim, Nor Can There Be Any Recreational or Commercial Structures or Commercial Operations Within 1 Mile Of The Mining Claim, As Set Forth In ARM 42.20.302(1)



# Land Ownership Valuation Decision Flow Chart 160 Acres and Larger

For consideration via this flow chart, the single land parcel or contiguous parcels of land must be under one ownership as defined in ARM 42.20.601, and must total at least 160 acres or more in size.

## START HERE

Does the Acreage Qualify As A Nonproductive Patented Mining Claim?  
(An Approved Application Is Required)

**NOTE:** There Can Be No Improvements On The Mining Claim, Nor Can There Be Any Recreational or Commercial Structures or Commercial Operations Within 1 Mile Of The Mining Claim, As Set Forth In ARM 42.20.302(1)

